

UNITED STATES  
SECURITIES AND EXCHANGE COMMISSION  
Washington, D.C. 20549

---

FORM 8-K

CURRENT REPORT

Pursuant to Section 13 or Section 15(d) of the Securities Exchange Act of 1934

Date of Report (Date of earliest event reported): May 31, 2017

**ITUS CORPORATION**

(Exact name of registrant as specified in its charter)

**Delaware**  
(State or other jurisdiction  
of incorporation)

**000-11254**  
(Commission  
File Number)

**11-2622630**  
(IRS Employer  
Identification No.)

**12100 Wilshire Boulevard, Suite 1275**  
**Los Angeles, CA**  
(Address of principal executive offices)

**90025**  
(Zip Code)

Registrant's telephone number, including area code: **(310) 484-5200**

(Former name or former address, if changed since last report)

---

Check the appropriate box below if the Form 8-K filing is intended to simultaneously satisfy the filing obligation to the registrant under any of the following provisions:

- Written communications pursuant to Rule 425 under the Securities Act (17 CFR 230.425)
- Soliciting material pursuant to Rule 14a-12 under the Exchange Act (17 CFR 240.14a-12)
- Pre-commencement communications pursuant to Rule 14d-2(b) under the Exchange Act (17 CFR 240.14d-2(b))
- Pre-commencement communications pursuant to Rule 13e-4(c) under the Exchange Act (17 CFR 240.13e-4(c))

Indicate by check mark whether the registrant is an emerging growth company as defined in Rule 405 of the Securities Act of 1933 (§230.405 of this chapter) or Rule 12b-2 of the Securities Exchange Act of 1934 (§240.12b-2 of this chapter).

Emerging growth company

If an emerging growth company, indicate by check mark if the registrant has elected not to use the extended transition period for complying with any new or revised financial accounting standards provided pursuant to Section 13(a) of the Exchange Act.

**Item 7.01 Regulation FD Disclosure.**

Attached as Exhibit 99.1 to this Current Report is the form of presentation that ITUS Corporation (“we,” “us,” “our,” or the “Company”) used in connection with its presentations to certain potential investors in the Company at an event hosted by WallStreet Research in Los Angeles CA on May 31, 2017.

**Item 9.01 Financial Statements and Exhibits**

(d) Exhibits

The following exhibits are filed with this Current Report on Form 8-K:

Exhibit No.	Description
99.1	Presentation

## SIGNATURES

Pursuant to the requirements of the Securities Exchange Act of 1934, the registrant has duly caused this report to be signed on its behalf by the undersigned hereunto duly authorized.

Dated: June 1, 2017

ITUS CORPORATION

By: /s/ Robert A. Berman  
Name: Robert A. Berman  
Title: President and Chief Executive Officer



# ITUS

C O R P O R A T I O N

Nasdaq: ITUS

May 2017

---

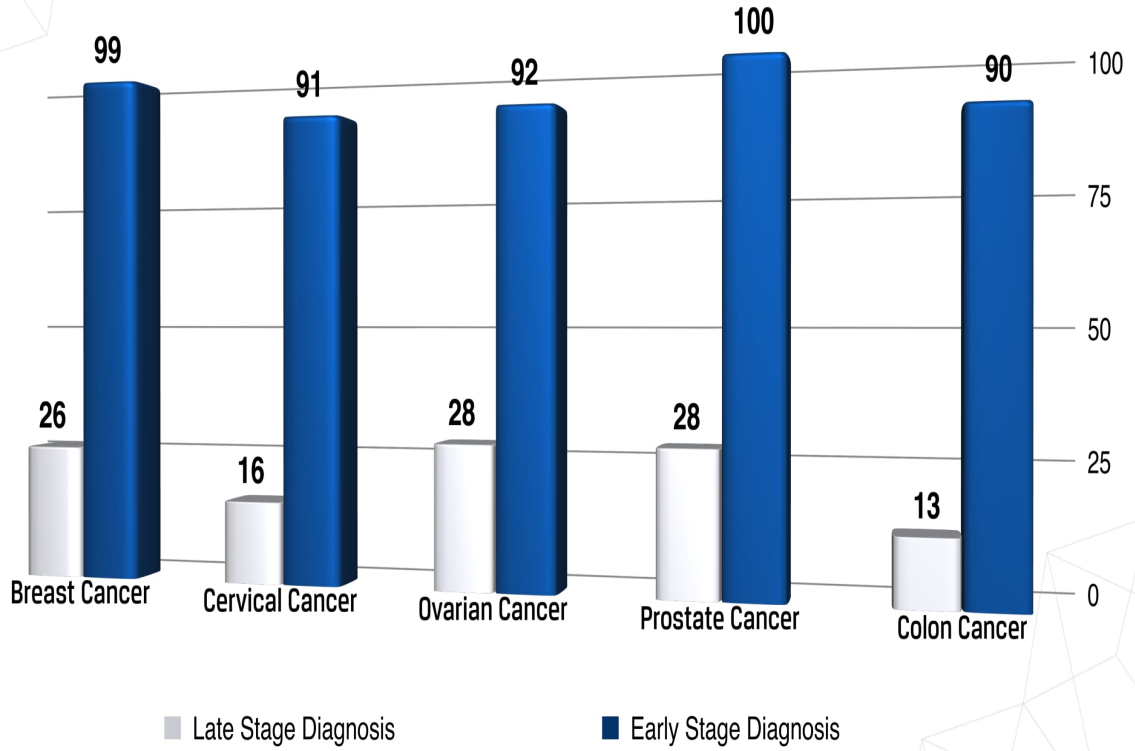


## FORWARD LOOKING STATEMENT

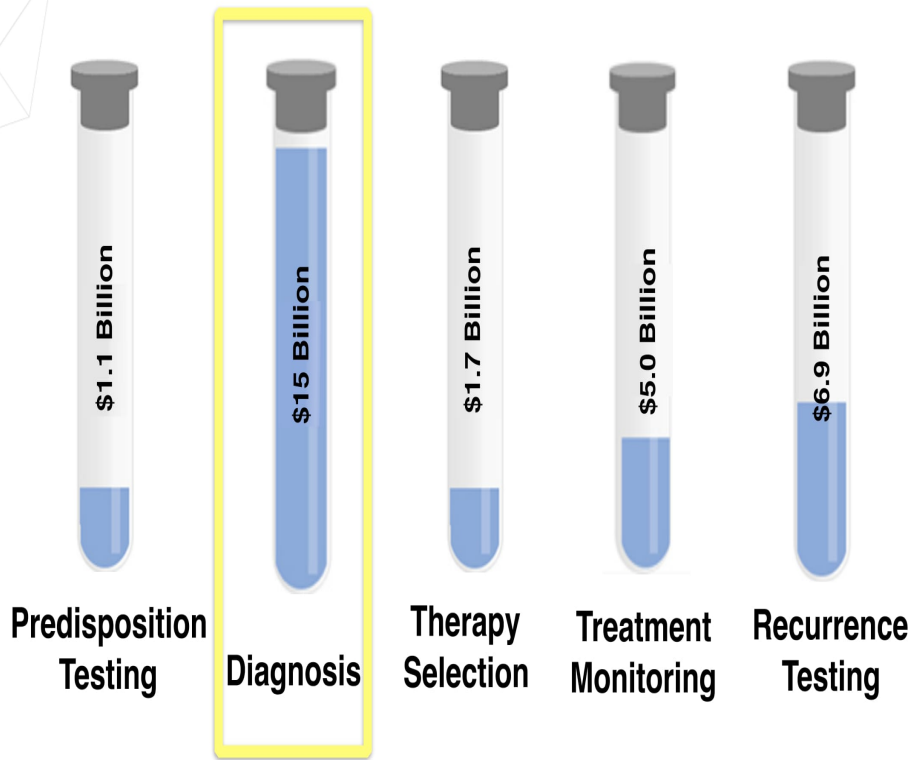
This presentation contains forward looking statements within the meaning of Section 27A of the Securities Act of 1933, as amended, and Section 21E of the Securities Exchange Act of 1934, as amended. Forward looking statements are not statements of historical facts, but rather reflect ITUS's current expectations concerning future events and results. We generally use the words "believes," "expects," "intends," "plans," "anticipates," "likely," "will" and similar expressions to identify forward-looking statements. Such forward-looking statements, including those concerning our expectations, involve risks, uncertainties and other factors, some of which are beyond our control, which may cause our actual results, performance or achievements, or industry results, to be materially different from any future results, performance, or achievements expressed or implied by such forward-looking statements. These risks, uncertainties and factors include, but are not limited to, those factors set forth in "Item 1A – Risk Factors" and other sections of our Annual Report on Form 10-K for the fiscal year ended October 31, 2016 as well as in our Quarterly Reports on Form 10-Q and Current Reports on Form 8-K. All forward looking statements speak only as of the date as of which they are made. We undertake no obligation to publicly update or revise any forward-looking statements, whether as a result of new information, future events or otherwise, except as required by law. You are cautioned not to unduly rely on such forward-looking statements when evaluating the information presented in this presentation.

## BENEFITS OF EARLY DETECTION

### 5 Year Survival Rates



Source: American Cancer Society



Sources: Piper Jaffray - The 2015 Liquid Biopsy Report  
Modor intelligence: Global Genetic Testing Market (2017 - 2022)

<b>Accurate</b>	<b>High Sensitivity (Detect early stage)</b>
<b>Reliable</b>	<b>High Specificity (Low False Positives)</b>
<b>Easy</b>	<b>Non-invasive, low pain, convenient Low risk of complications</b>
<b>Cost Effective</b>	<b>Affordable (Reimbursable)</b>



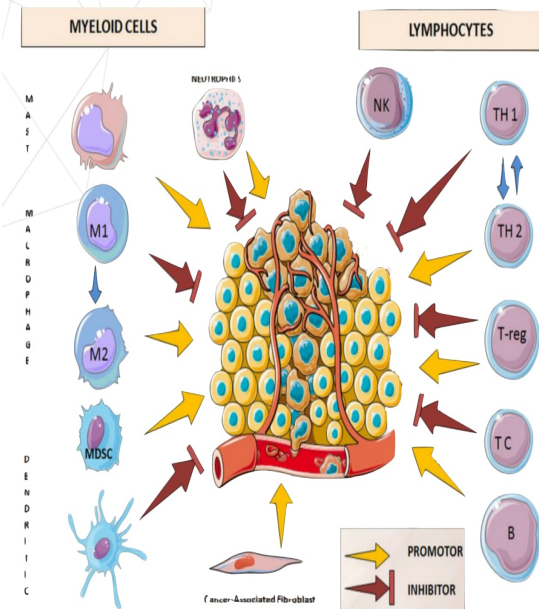
## PROBLEMS WITH CANCER SCREENING TESTS

	<i>Low Dose CT (Lung Cancer)</i>	<i>PSA (Prostate Cancer)</i>	<i>Mammogram (Breast Cancer)</i>	<i>Colonoscopy (Colon Cancer)</i>
<b>Accurate</b>	✓	✗	✓	✓
<b>Reliable</b>	✗	✗	✗	✓
<b>Easy</b>	✗	✓	✗	✗
<b>Cost Effective</b>	✗	✓	✗	✗

ITUS

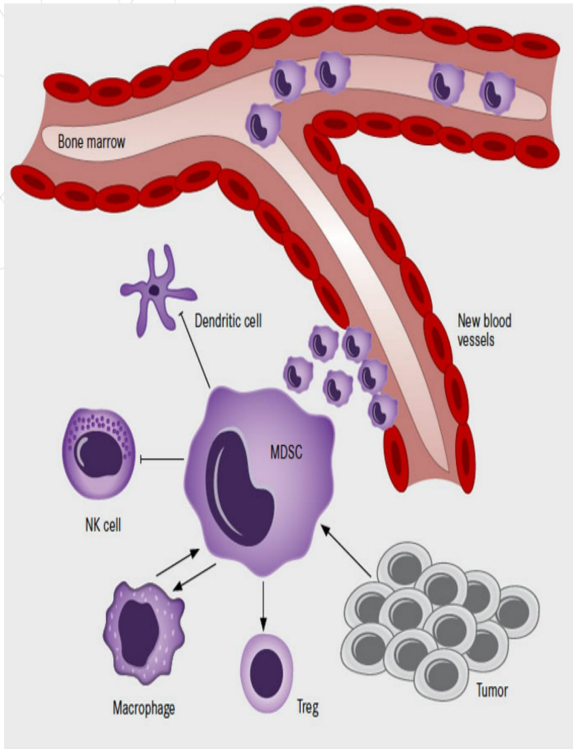


## IMMUNE RESPONSE TO CANCER



- It is well known that malignancies induce a strong immune response
- The Tumor Micro-Environment consists of cancer cells as well as immune cells including T-cells, NK cells, B- cells, Monocytes, Dendritic cells, etc.
- The interaction between cancer cells and immune cells, and in particular the immunosuppressive impact of cancer cells on immune cells has been the subject of research

## MYELOID DERIVED SUPPRESSOR CELLS - MDSC'S



- Myeloid Cells emanate from progenitor stem cells in bone marrow and include cells such as Monocytes, Macrophages, Eosinophils, Neutrophils
- MDSCs are immature Myeloid Cells whose development is inhibited by the cancer and which are corrupted to suppress, general immune and T-cell function
- A correlation exists between the concentration of MDSCs and tumor development and prognosis

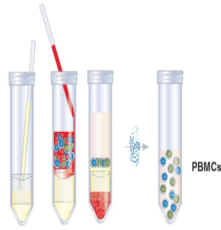


- By using proprietary protocols, ITUS has been able to detect diagnostic subsets of MDSCs and other immune cells in the peripheral blood of cancer patients
- ITUS has detected MDSCs at various stages and types of cancers, including stage 1
- By using subsets of MDSCs and other immune cells as biomarkers, ITUS has been able to accurately distinguish blood samples from cancer patients and blood samples from healthy patients

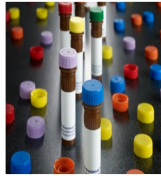
# ITUS



Single Tube Whole Blood



Blood Separation via Density Centrifugation

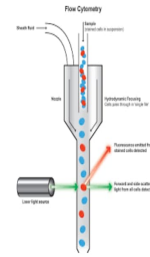


Fluorescent Cell Surface Markers (Proprietary Formula)

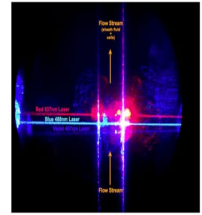
# Assay Development



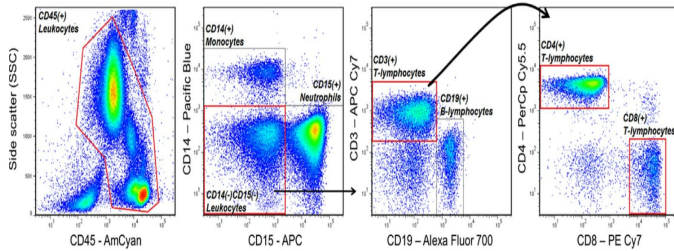
Flow Cytometry



Cell Counting Sorting

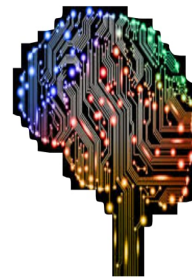


Laser Impedance Biomarker Detection



Data Processing via Proprietary Auto-Gating Software

MDSCs + Other Immune Cell Populations



Proprietary Neural Network

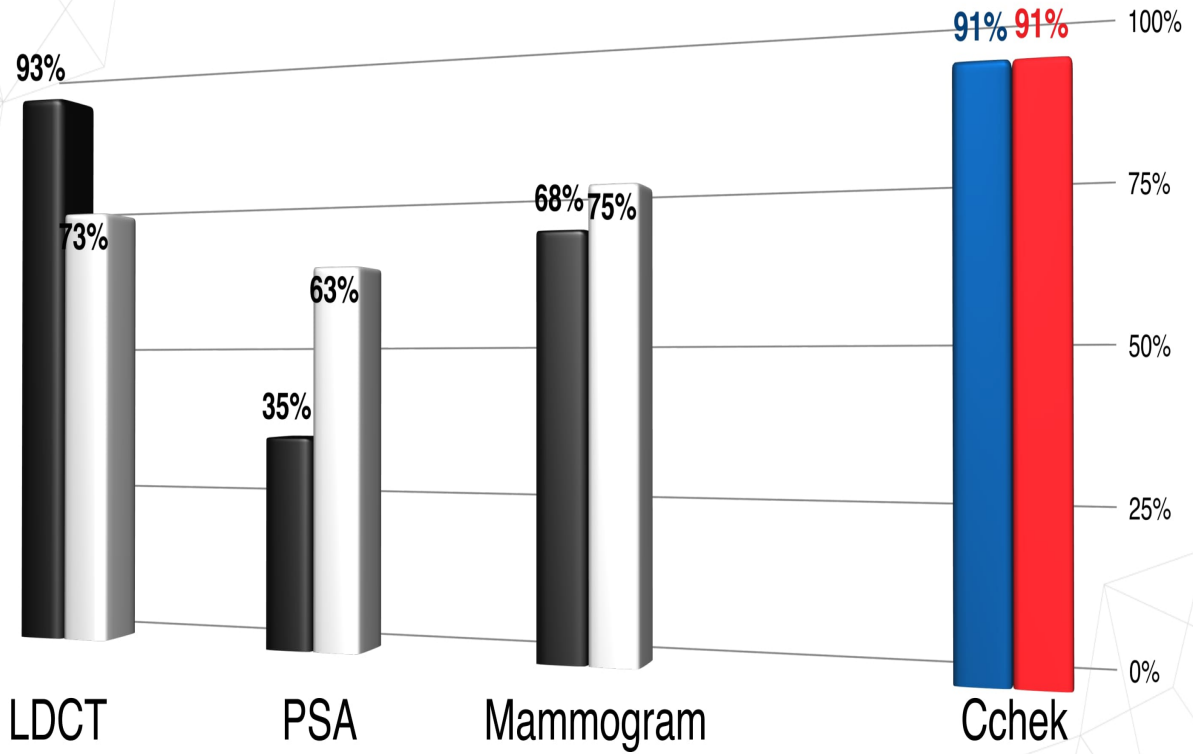


Healthy



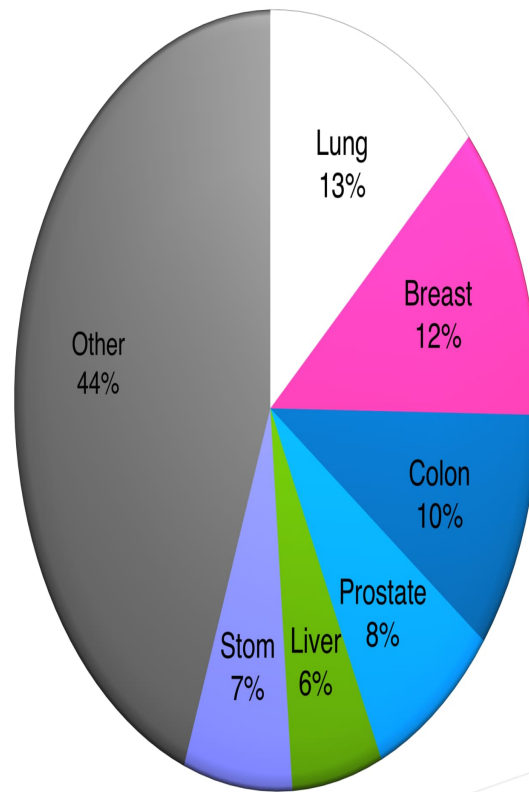
Cancer

Sensitivity
  Specificity
  Cchek-Sensitivity
  Cchek-Specificity



Cchek results tested in an unblinded manner and based on 54 samples from patients with 14 types and varying stages of cancer and 34 healthy patients. Testing did not include benign conditions.

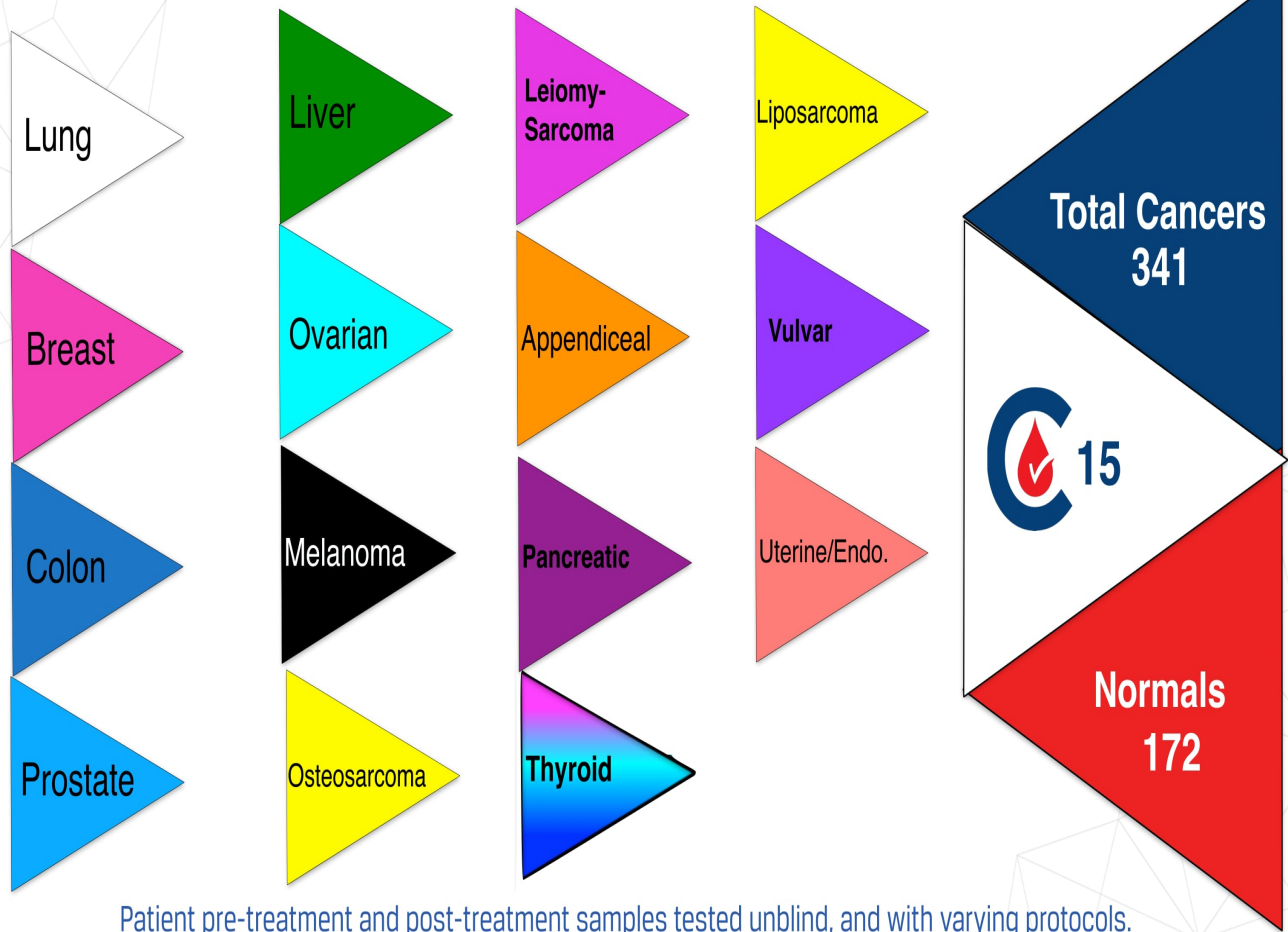
## WORLDWIDE CANCER INCIDENCES





# ITUS

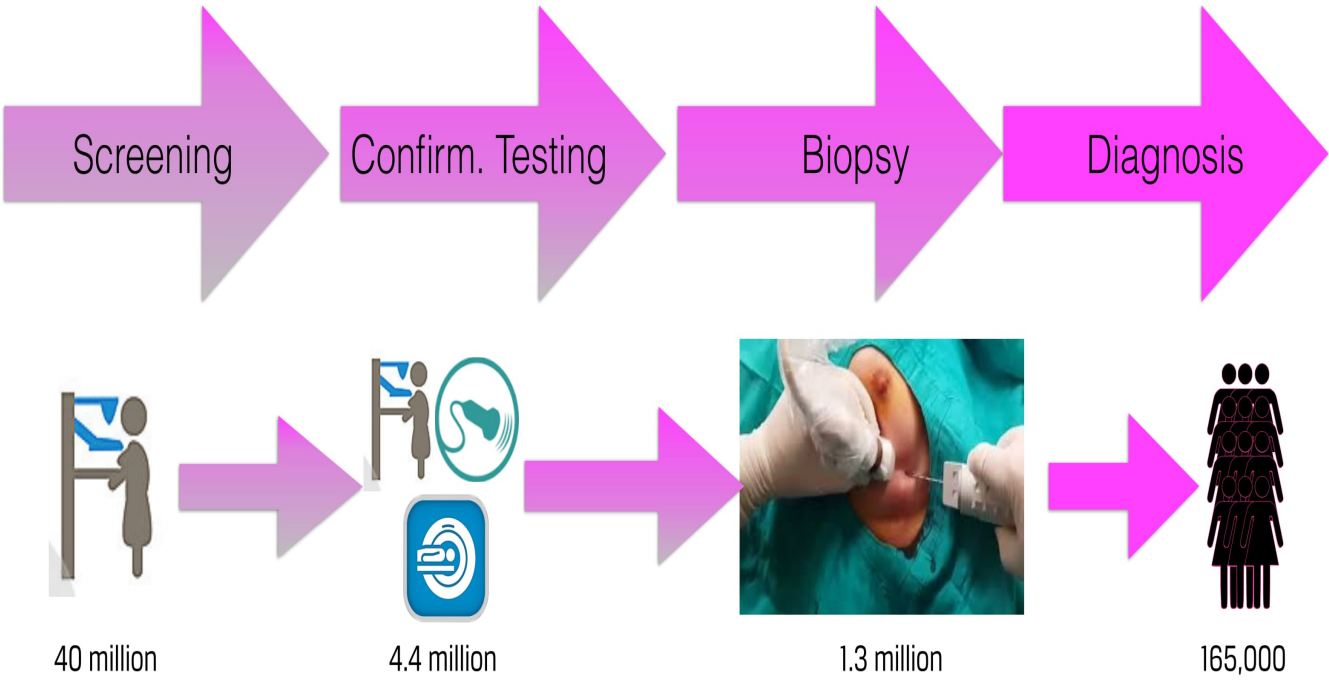
## CANCER TYPES VALIDATED



Patient pre-treatment and post-treatment samples tested unblind, and with varying protocols.

<b>Screening</b>	Testing for asymptomatic adults
<b>Confirmatory Testing</b>	Verification for Mammogram, PSA, Chest X-ray
<b>Treatment Monitoring</b>	Effectiveness of chemotherapy, radiation, and other treatments
<b>Recurrence Testing</b>	Allows frequent recurrence monitoring

**BREAST CANCER**

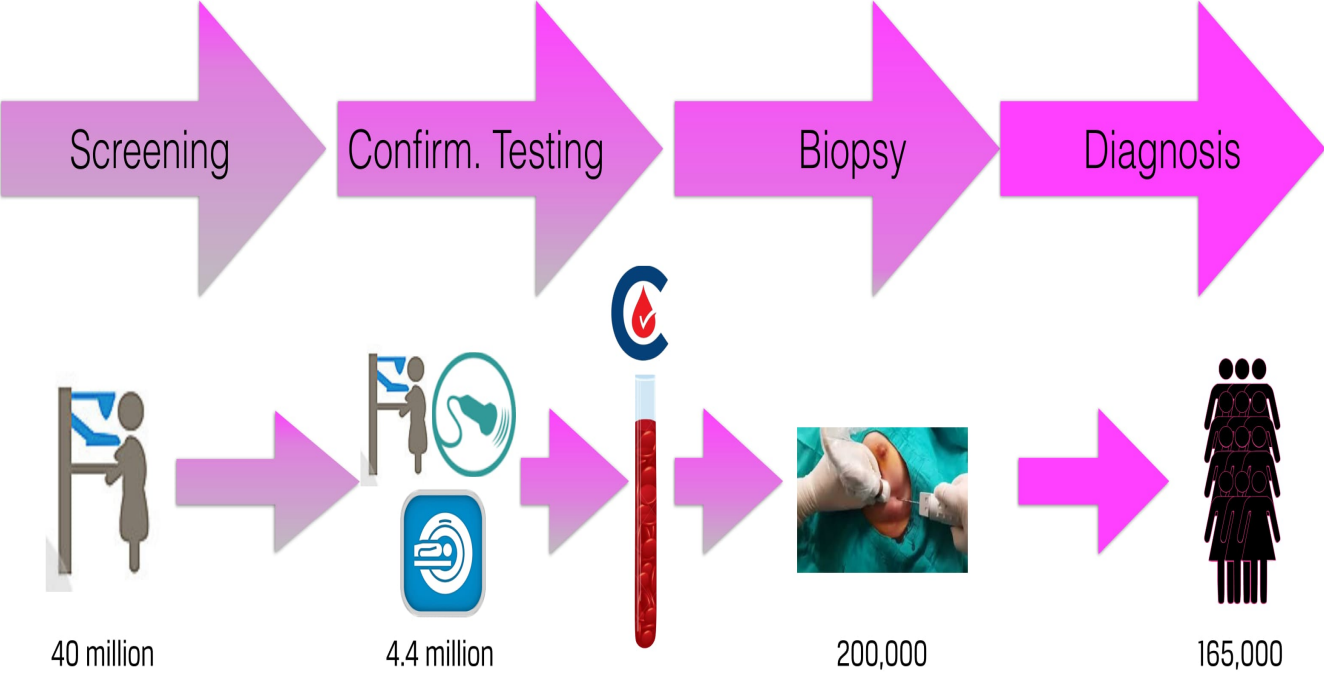


**1.1 million unnecessary needle biopsies**

**\$3.7 Billion wasted**

---

**BREAST CANCER**

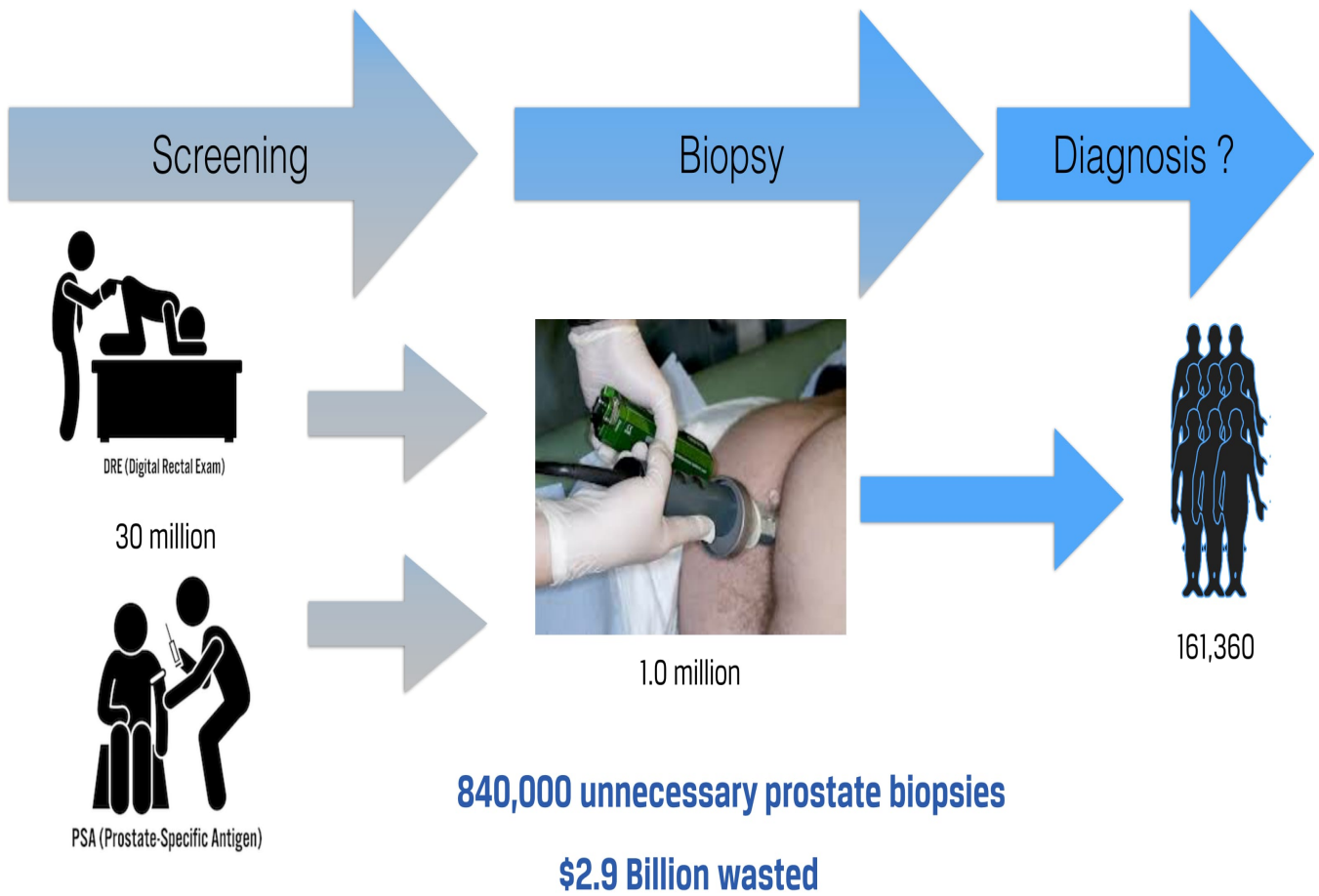


**1.1 Million fewer needle biopsies**

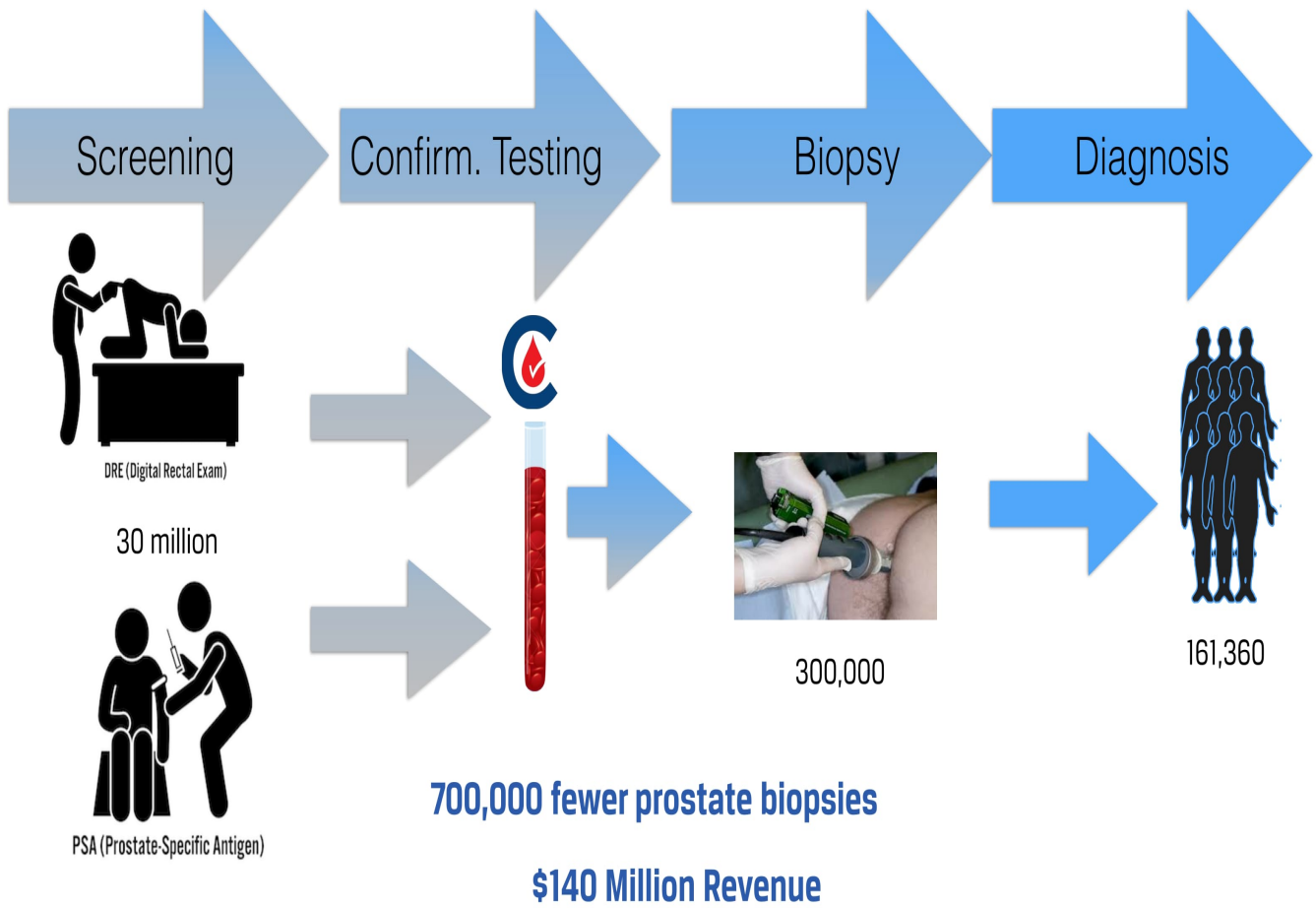
**\$220 Million Revenue**

---

# PROSTATE CANCER



# PROSTATE CANCER



# ITUS

MDAnderson  
~~Cancer~~ Network™



# COLLABORATIONS



**Dr. Arnold Baskies**

Chairman - American Cancer Society



**Dr. Dmitry Gabrilovich**

Renowned expert Tumor Derived Myeloid Cells



**Dr. Michael Shepard**

Lead Scientist at Genentech - Herceptin





**Amit Kumar, Ph.D** - Executive Chairman, Inventor of Cchek™

A.B. Occidental College, Ph. D. Caltech, Post-Doc. Harvard

Former CEO - CombiMatrix Corporation

Frequent board member and advisor to investment funds, venture capital firms, and Fortune 500 companies.

**Robert Berman** - President and Chief Executive Officer, Director

B.S. University of Pennsylvania Wharton School, J.D. Northwestern University Law School

Former Chief Operating Officer and General Counsel - Acacia Research Corporation

On air guest and author - Cancer and cancer diagnostics - FOX News, Forbes, Oncazine

**Michael Catelani** - Chief Financial Officer

B.S. Sacramento State, M.B.A. University of California, Davis

Former Co-founder, President, Chief Financial Officer - Tacere Therapeutics, Inc.

Former Chief Financial Officer - Benetic Biopharma Limited

**John Roop** - Senior Vice President, Engineering

B.S. University of California, Berkley

Co-founder StarSight Telecast

Silicon Valley design engineer

**Refine Protocols**

---

**Refine Artificial Intelligence**

---

**Cross-reactivity and Benign Conditions**

---

**Announce First Commercial Product**

---

**Pre-Clinical Trial**

---

**Regulatory Standardization**

---

**Clinical Trial**

---

**Seek Regulatory Approval**

---



## ITUS - FINANCIAL HIGHLIGHTS

(as of May 26, 2017)

---

**Cash on Hand** ▶ \$8.1M

---

**Monthly Burn** ▶ \$350K

---

**Debt** ▶ \$3.0M

---

**Market Cap** ▶ \$14M

---

**52 Week Range** ▶ \$.86 - \$6.82

---

**Shares Outstanding** ▶ 15.1M

---

**Non-Affiliated Float** ▶ 14.4M

---

# ITUS

C O R P O R A T I O N

Focused on Innovation